

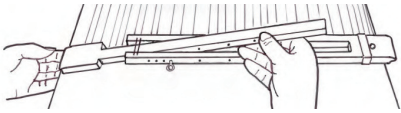
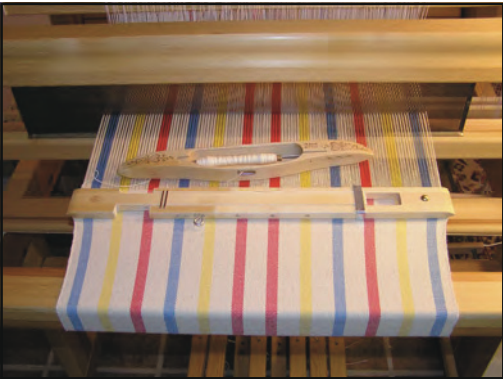
My First Towels

Designed by *Joanne Hall*



This kit is made from beautiful Egyptian 8/2 cotton threads, from Sweden. You will need 2 or 4 shafts, 12 dent reed, 18 inches weaving width and 432 heddles.

| | | | |
|---|--------------------|--|--|
| Warp color order for each bout (chain). | | This kit contains 8/2 cotton on 8.8 oz tubes, 1 tube natural, 1 tube bleached, 1 ea, red, yellow and blue (2 lbs 12 oz of thread). | |
| Natural | 12 threads | Wind 6 yards to make 6 towels. | |
| Red | 12 | Number of heddles needed on each of 4 shafts: 108 Total # of ends: 432 | |
| Natural | 24 | Warps/inch: 24 Warp Length: 4 yards | |
| Yellow | 12 | Sley: 2 per dent Wefts/inch: plain weave: 18-20 Twill: 26-30 | |
| Natural | 24 | Warp and weft: 8/2 Egyptian cotton | |
| Blue | 12 | This kit makes six towels approx. 17" x 23" | |
| Natural | 24 | Wind 2 bouts (chains) with 216 ends in each bout. | |
| Red | 12 | | |
| Natural | 24 | | |
| Yellow | 12 | | |
| Natural | 24 | | |
| Blue | 12 | | |
| Natural | 12 | | |
| TOTAL | 216 threads | | |



Use a temple. It will help you to get a nice tight weave, a more even beat, keep your weft straight and make the weaving and beating easier. It will also prevent broken warp threads at the selvages.

Another great kit from:



1-541-246-8679

www.glimakraUSA.com

orders@glimakrausa.com

To thread and weave the towels:

Select and thread plain weave or one of the other weaves below.

1. Weave 1 inch hem in the selected weave.
2. Decide if you want to weave only with the natural or if you will weave some weft stripes with the colors. Weave approximately 18-20 wefts per inch for plain weave, 20-24 for other weaves. Weave colored stripes 10-12 wefts to make them 1/2 inch.
3. Weave the towel about 24 to 26 inches long.
4. Weave 1 in hem.
5. Weave one thread of a different color to mark a cutting line, then start the second towel.

Plain Weave

Plain weave is good for beginners and for weaving the first towel. If you are using a table loom with levers, raise shafts 1&3 and weave 1 shot of weft. Release 1&3 and raise 2&4 and weave 1 shot of weft.

Twill

Table loom treading for twill:

1&2, 1&4, 3&4, 2&3,

Weave 20 to 24 wefts per inch. Use the same treading for hems. If a selvage thread is not being caught after weaving four wefts, unweave these four wefts and begin on the opposite side. If you still do not catch the selvage warp thread, remove this thread and let it hang off the back of the loom. When changing colors, start the new weft in the same direction the previous weft would have gone.

Broken Twill

Table loom treading for broken twill: 1&2, 3&4, 4&1, 2&3

Use the same treading for hems.

Herringbone or Goose eye for more a advanced weave

A floating selvage is not needed for weaving the herringbone. If a selvage thread is not being caught, simply cut off the thread. It is helpful to use a floating selvage when weaving the goose eye. To do this, take the first and last threads of your warp out of their heddles before you tie up the warp threads. To weave, enter the shuttle above the floating selvage and exit below.

Table loom treading for herringbone

1&2, 4&1, 3&4, 2&3

Table loom treading for goose eye:

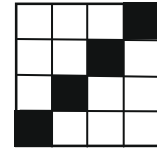
1&2, 4&1, 3&4, 2&3, 1&2, 1&4, 2&3, 3&4, 4&1, 1&2, 2&3, 3&4,

Finishing your towels

Wash your towels in your washing machine using warm water. Dry in the sun or use your dryer. Expect shrinkage in length of about 2 1/2" in, or 10-12 %

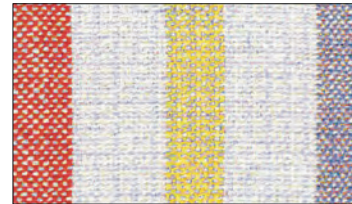
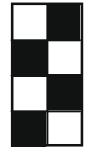
Plain weave
threading draft

4
3
2
1



Treadle
Tie-up

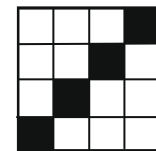
4
3
2
1



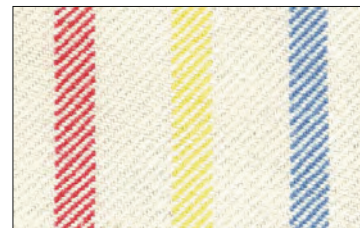
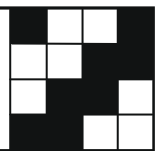
Treading
draft



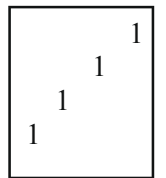
Twill threading draft



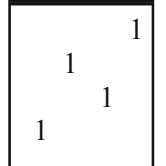
Treadle
Tie-up



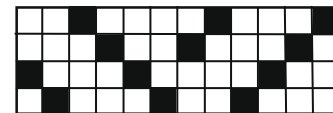
Twill
Treading



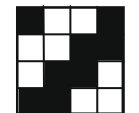
Broken
Twill
Treading



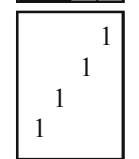
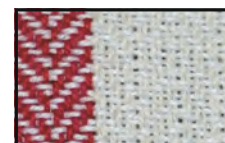
Herringbone threading draft



Treadle
Tie-up



Herringbone



Goose
eye

