

Greta

The Cottolin Towel Kit

Weave five elegant and practical towels in natural, white and black Cottolin threads. Cottolin is a combination of cotton and linen, is very absorbent and easy to care for.



The Greta towel kit is made from Bockens cottolin from Sweden, which is the highest quality cottolin available. It is made from Egyptian long staple cotton and high quality linen.

You can purchase cottolin threads from the shop where you purchased this kit.

The towels are approx 16 x 24 inches. You will need four shafts, 12 dent reed, 18 inches weaving width and 432 heddles. Instructions include plain weave, twill, broken twill, herringbone and goose eye.

EPI (warp ends/inch): 24

Number of heddles needed on each shaft: 108

Finished width: 15in (twill) 16 1/2 in (plain)

PPI plain weave: 18-20 Twill: 26-30

of threads in a heddle: 1

of threads in a dent: 2

Wind 2 bouts (chains), each 5yds long, 216 threads in each bout

Kit includes 1 tube of black, 1 of white
and two tubes of natural

Warp Color Order (one bout)

24 natural

12 black

48 natural

12 white

24 natural

12 white

48 natural

12 black

24 natural

Total: 216



West stripe pattern

hem 1"

natural, 1 inch

Part 1:

black 1/2"

natural 2"

white 1/2",

natural 1"

white 1/2"

natural 2"

black 1/2"

Center: natural 7-8"

repeat Part 1

natural 1"



For more information about this kit, shuttles, quills, reeds and warping equipment, ask at the shop where you purchased this kit. For more information about using a temple, or any other weaving question, read the FAQ on the website:

www.glimakraUSA.com or call 1-541-246-8679

To thread and weave the towels:

Select plain weave or one of the other weaves below.

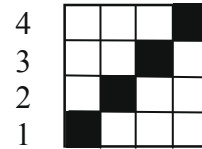
1. Weave 1 in hem in the selected weave.
2. Weave 1 inch with the natural and count your wefts. Weave approximately 18-20 wefts per inch for plain weave, 24-26 for other weaves.
3. Weave the towel 24 to 26 inches long.
4. Weave 1 in hem.
5. Weave one thread of a different color to mark a cutting line, then start the second towel. There is enough black and white weft to weave one towel in the weft stripe pattern on the cover page.

Plain Weave

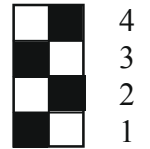
Plain weave is good for beginners and for weaving the first towel.



Plain weave threading draft



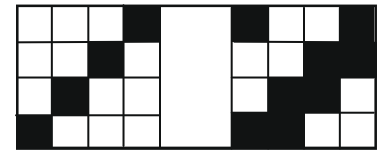
Treadle Tie-up



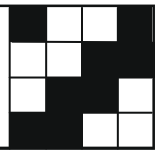
Treading draft



Twill threading draft



Treadle Tie-up

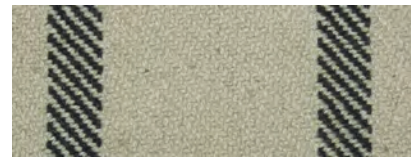


Twill

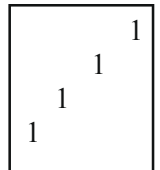
Table loom treading for twill:

1&2, 1&4, 3&4, 2&3,

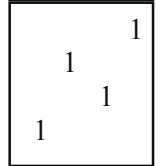
Weave 20 to 24 wefts per inch. Use the same treading for hems. If a selvage thread is not being caught after weaving four wefts, unweave these four wefts and begin on the opposite side. If you still do not catch the selvage warp thread, remove this thread and let it hang off the back of the loom. When changing colors, start the new weft in the same direction the previous weft would have gone.



Twill Treading



Broken Twill Treading



Broken Twill

Table loom treading for broken twill: 1&2, 3&4, 4&1, 2&3
Use the same treading for hems.

Herringbone or Goose eye for more advanced weavers

Herringbone

A floating selvage is not needed for weaving the herringbone. If a selvage thread is not being caught, simply cut off the thread. It is helpful to use a floating selvage when weaving the goose eye. To do this, take the first and last threads of your warp out of their heddles before you tie up the warp threads. To weave, enter the shuttle above the floating selvage and exit below.

Table loom treading for herringbone 1&2, 4&1, 3&4, 2&3

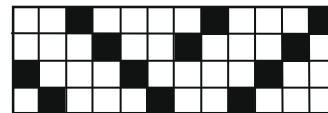
Table loom treading for goose eye:

1&2, 4&1, 3&4, 2&3, 1&2, 1&4, 2&3, 3&4, 4&1, 1&2, 2&3, 3&4,

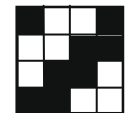
Finishing your towels

Wash your towels in your washing machine using warm water. Air dry or use your dryer. Expect shrinkage in length of 10-12 %, or about 2 1/2" in length.

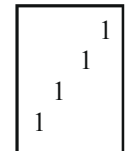
Herringbone threading draft



Treadle Tie-up



herringbone



goose eye

