

# Elin

## Cottolin Towel Kit

Weave five elegant and practical towels in white, yellow and blue Cottolin threads.



Cottolin is a combination of cotton and linen, is very absorbent, easy to care for and it makes weaving carefree. Bockens Cottolin is made from long staple, high quality cotton and the finest linen.

Four shafts and a 12 dent reed are required. You will need 18 inches weaving width and 432 heddles. Instructions included for weaving plain, twill or broken twill. For the more adventuresome weavers, you can try herringbone, goose eye or an 8 shaft weave. Elin towels are approx 16 x 24 inches.

Number of heddles needed on each shaft: 108

EPI (warp ends/inch): 24,

Finished width: 15 in (twill) 16 1/2 in (plain)

# of threads in a heddle: 1

Wind 2 bouts (chains) each with 216 ends

Wind the warp with the white cottolin and the two colors, and weave with the half bleached cottolin.

Warp length: 5 yds

Total # of warp ends: 432

Wefts per inch, plain weave: 18-20 Twill: 26-30

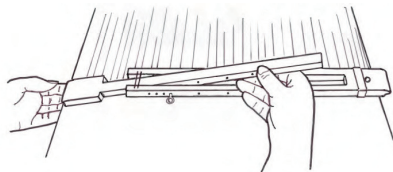
# of threads in a dent: 2

### Warp Color Order (for one bout)

24 white,  
12 blue  
48 white  
12 yellow  
24 white  
12 yellow  
48 white  
12 blue  
24 white

### To weave the towels

Select one of the weaves.  
Weave a 1 inch hem, then 24 inches,  
then the other 1 inch hem.  
Continue to weave the other towels.



Use a 16 inch– 22inch temple



For more information about this kit, shuttles, quills, reeds and warping equipment, ask at the shop where you purchased this kit. For more information about using a temple, or any other weaving question, read the FAQ on the website:

[www.glimakraUSA.com](http://www.glimakraUSA.com) or call 1-541-246-8679

## To thread and weave the towels:

Select plain weave or one of the other weaves below.

1. Weave 1 in hem in the selected weave.
2. Weave 1 inch with the natural and count your wefts. Weave approximately 18-20 wefts per inch for plain weave, 24-26 for other weaves.
3. Weave the towel 24 to 26 inches long.
4. Weave 1 in hem.
5. Weave one thread of a different color to mark a cutting line, then start the second towel. There is enough black and white weft to weave one towel in the weft stripe pattern on the cover page.

### Twill

Table loom treading for twill:

1&2, 1&4, 3&4, 2&3,

Weave 20 to 24 wefts per inch. Use the same treading for hems. If a selvage thread is not being caught after weaving four wefts, unweave these four wefts and begin on the opposite side. If you still do not catch the selvage warp thread, remove this thread and let it hang off the back of the loom. When changing colors, start the new weft in the same direction the previous weft would have gone.

### Broken Twill

Table loom treading for broken twill: 1&2, 3&4, 4&1, 2&3  
Use the same treading for hems.

### Herringbone or Goose eye for more advanced weavers

#### Herringbone

A floating selvage is not needed for weaving the herringbone. If a selvage thread is not being caught, simply cut off the thread. It is helpful to use a floating selvage when weaving the goose eye. To do this, take the first and last threads of your warp out of their heddles before you tie up the warp threads. To weave, enter the shuttle above the floating selvage and exit below.

Table loom treading for herringbone 1&2, 4&1, 3&4, 2&3

Table loom treading for goose eye:

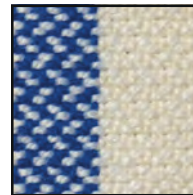
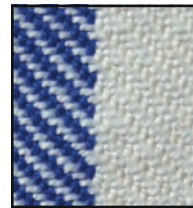
1&2, 4&1, 3&4, 2&3, 1&2, 1&4, 2&3, 3&4, 4&1, 1&2, 2&3, 3&4,

### Finishing your towels

Wash your towels in your washing machine using warm water. Air dry or use your dryer. Expect shrinkage in length of 10-12 %, or about 2 1/2" in length.

### Plain Weave

Plain weave is good for beginners and for weaving the first towel.



Plain weave  
threading draft

4				■
3			■	
2	■			
1	■			

Treadle  
Tie-up

4	■	
3		■
2	■	
1		■

Treading  
draft

1
1

Twill threading draft

			■	
		■		
	■			
■				

Treadle  
Tie-up

■			
	■		
		■	
			■

Twill  
Treading

			1
		1	
	1		
1			

Broken  
Twill  
Treading

			1
	1		
		1	
1			

Herringbone threading draft

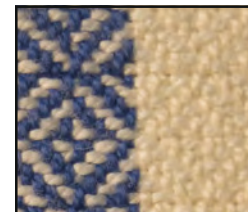
	■				■
		■			
			■		
	■				
■					

Treadle  
Tie-up

■			
	■		
		■	
			■



herringbone



goose eye

			1
		1	
	1		
1			

			1
		1	
	1		
			1
	1		
		1	
			1
1			
			1

# Towels in Eight Shaft Weave

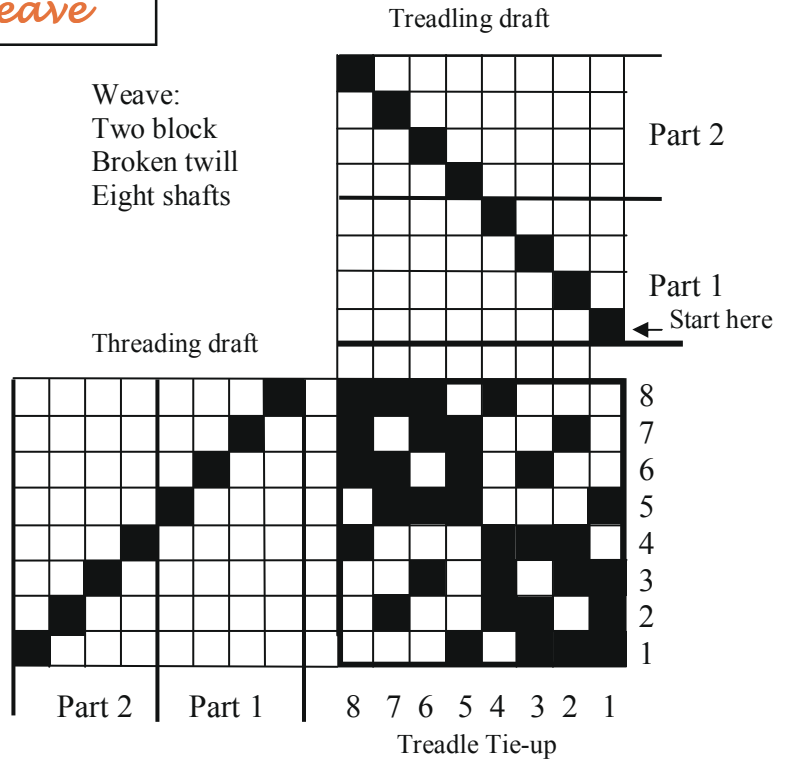
## Threading Instructions

Part 1 and part 2 are threaded alternately. Each part is threaded 2 to 4 times, as follows:

Part	# of times to thread	color
1	2 times	white
2	2	white
1	2	white
2	3	blue
1	4	white
2	4	white
1	4	white
2	3	yellow
1	2	white
2	2	white
1	2	white
2	3	yellow
1	4	white
2	4	white
1	4	white
2	3	blue
1	4	white
2	4	white

Reverse to thread part 1, white, 4 times, continuing to the beginning

Weave:  
Two block  
Broken twill  
Eight shafts



*Four Treadle Weave*  
Weave only part 1 of the treading



*Eight treadle weave*

To weave: alternate parts 1 & 2, weave each part with an equal size or vary the size of the stripe.



### To weave the towel

1. Select a treading on page 2 or 4.
2. Weave 1 inch hem in the selected weave.
3. Weave the towel 24 inches long.
4. Weave 1 in hem.

### To weave the 8 shaft towel

1. Select a treading, either using four treadles or using eight.
  2. Weave 1 in hem in the selected weave.
  3. Weave the towel 24 inches long.
  4. Weave 1 in hem.
- A floating selvage is not needed for weaving.



The Greta Towel Kit is another kit cottolin threads. It is designed in natural background, with white and black stripes. Ask for it at the shop where you purchased this kit.