

Greta

The Cottolin Towel Kit

Weave four elegant and practical towels in natural, white and black Cottolin threads. Cottolin is a combination of cotton and linen, is very absorbent and easy to care for.



Greta towels are approx 16 x 24 inches. Four shafts and a 12 dent reed are required. You will need 18 inches weaving width and 432 heddles. Instructions included are for weaving plain, twill or broken twill. For the more adventuresome weavers, there is a threading included for herringbone and goose eye.

Warp length: 4 yds Total # of warp ends: 432
 EPI (warp ends/inch): 24 Number of heddles needed on each shaft: 108
 Finished width: 15in (twill) 16 1/2 in (plain) PPI plain weave: 18-20 Twill: 26-30
 # of threads in a heddle: 1 # of threads in a dent: 2
 # of bouts (chains): 2 # of threads in each bout (chain): 216

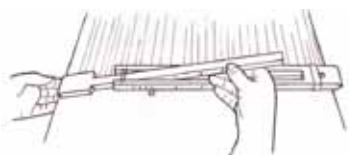
Back to front warping information:

To use a reed to spread the warp, using a 12 dent reed, put 6 threads in a dent and skip two dents. If you use a raddle, 1/2 inch spaces: 12 threads/space

Warp Color Order

- 24 natural
- 12 black
- 48 natural
- 12 white
- 24 natural
- 12 white
- 48 natural
- 12 black
- 24 natural
- Total: 216

There is enough black and white weft included to weave one towel with weft stripes or to use them for the hems.



Use a 16 inch– 22inch temple

Weft stripe pattern

hem 1"
 natural, 1 inch
Part 1:
 black 1/2"
 natural 2"
 white 1/2",
 natural 1"
 white 1/2"
 natural 2"
 black 1/2"
Center: natural 7-8"
 repeat **Part 1**
 natural 1"
 hem 1"



For more information about this kit, shuttles, quills, reeds and warping equipment, ask at the shop where you purchased this kit. For more information about using a temple, or any other weaving question, read the FAQ on the website:

www.glimakraUSA.com or call toll free 866 890 7314

To thread and weave the towels:

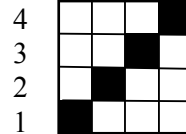
Select plain weave or one of the other weaves below.

1. Weave 1 in hem in the selected weave.
2. Weave 1 inch with the natural and count your wefts. Weave approximately 18-20 wefts per inch for plain weave, 24-26 for other weaves.
3. Weave the towel 24 to 26 inches long.
4. Weave 1 in hem.
5. Weave one thread of a different color to mark a cutting line, then start the second towel. There is enough black and white weft to weave one towel in the weft stripe pattern on the cover page.

Plain Weave

Plain weave is good for beginners and for weaving the first towel.

Plain weave
threading draft



Treadle
Tie-up



4
3
2
1

4
3
2
1



Treadling
draft



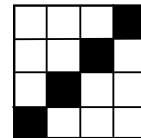
Twill

Table loom treadling for twill:

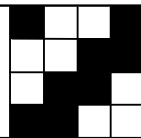
1&2, 1&4, 3&4, 2&3,

Weave 20 to 24 wefts per inch. Use the same treadling for hems. If a selvage thread is not being caught after weaving four wefts, unweave these four wefts and begin on the opposite side. If you still do not catch the selvage warp thread, remove this thread and let it hang off the back of the loom. When changing colors, start the new weft in the same direction the previous weft would have gone.

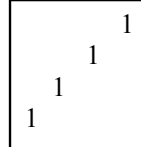
Twill threading draft



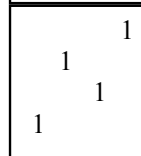
Treadle
Tie-up



Twill
Treadling



Broken
Twill
Treadling



Broken Twill

Table loom treadling for broken twill: 1&2, 3&4, 4&1, 2&3
Use the same treadling for hems.

Herringbone or Goose eye for more advanced weavers

Herringbone

A floating selvage is not needed for weaving the herringbone. If a selvage thread is not being caught, simply cut off the thread. It is helpful to use a floating selvage when weaving the goose eye. To do this, take the first and last threads of your warp out of their heddles before you tie up the warp threads. To weave, enter the shuttle above the floating selvage and exit below.

Table loom treadling for herringbone 1&2, 4&1, 3&4, 2&3

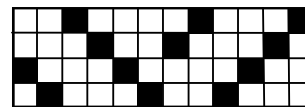
Table loom treadling for goose eye:

1&2, 4&1, 3&4, 2&3, 1&2, 1&4,
2&3, 3&4, 4&1, 1&2, 2&3, 3&4,

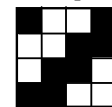
Finishing your towels

Wash your towels in your washing machine using warm water. Air dry or use your dryer. Expect shrinkage in length of 10-12 %, or about 2 1/2" in length.

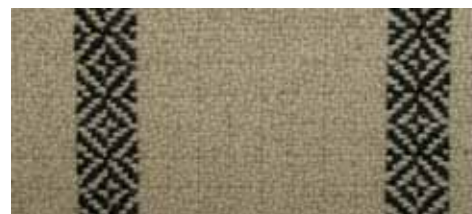
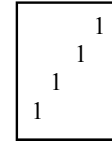
Herringbone threading draft



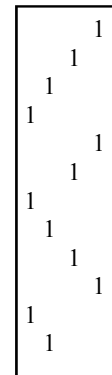
Treadle
Tie-up



herringbone



goose eye



Greta towel kit

Instructions include threading for plain weave, twill, broken twill or you can choose another threading to give you herringbone or goose eye patterns.

Contact us to get this as a kit with pre wound warp or with the warp on tubes.